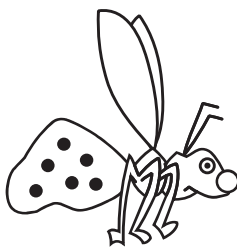


1 See if you can identify the bugs using the key below.

- | | |
|--------------------------|-----------|
| A Bug has large wings. | Go to B |
| Bug has short wings. | Go to D |
| B Bug has spots. | Go to C |
| Bug has stripes. | Bug |
| C Wings have veins. | Bug |
| Wings do not have veins. | Bug |
| D Bug has antennae. | Bug |
| Bug has no antennae. | Bug |



V



W



X



Y



Z

2 Why would the question (Has the bug got big round eyes?) not be suitable for our key?

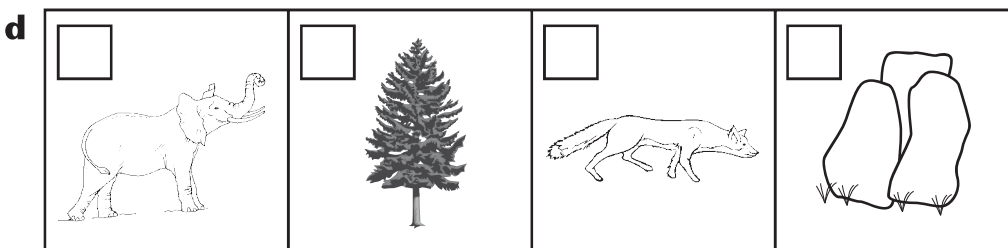
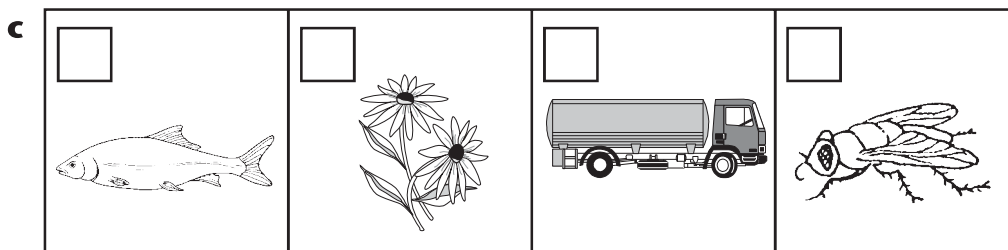
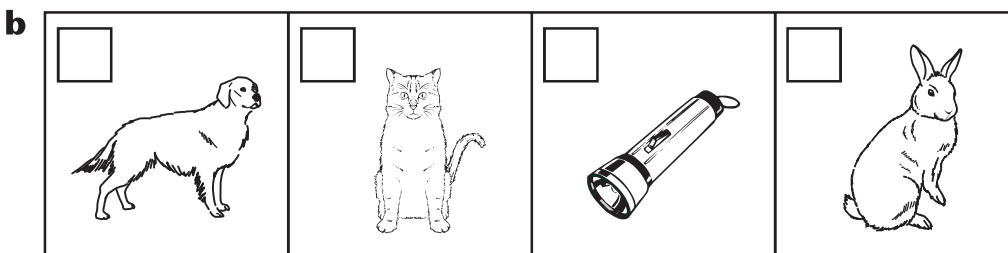
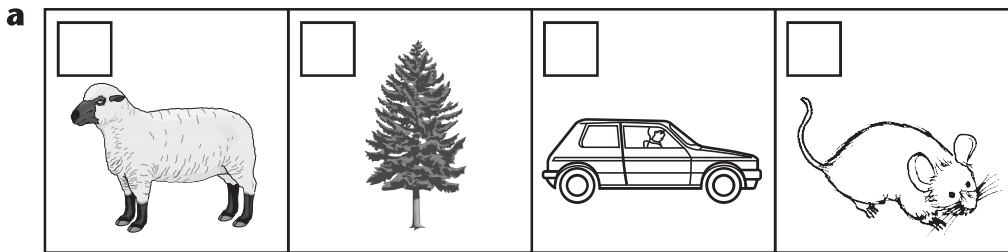
.....

3 Can you think of any other suitable questions that could have been used in the key above?

.....

.....

- 4 Living things all carry out common processes. Look at the four sets of pictures below and decide which of them is the odd one out.



Can you explain your choices?

.....

.....

.....

.....

- 1 In science, keys can be used to help you work out what something is. Make a key to identify the scientists shown below.



Physicist



Archaeologist



Biologist



Chemist



Astronomer



Geologist

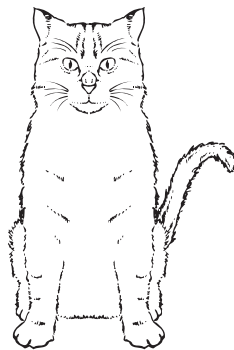
- 2 Living things must be capable of doing seven important life processes. Rearrange the words to name these processes:

GONVIM	M	WRINGGO	G
SPRING ERI	R	ICEDGONPURR	R
NESSGIN	S	CRINGETEX	E
FIDEENG	F		

- 3 We know that a cat is living. It is capable of carrying out all of the seven processes you have listed above.

The diagram below shows some of these processes. Complete the diagram.

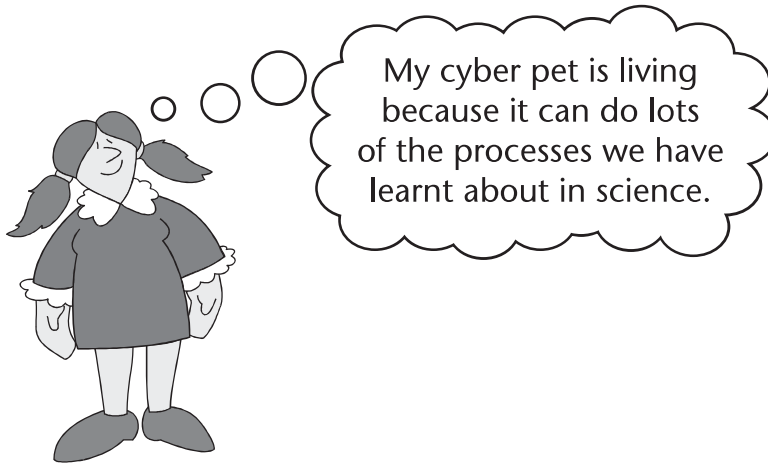
I g..... from a kitten to a cat.



I need f..... to stay alive.

I r..... away when I see a dog.

- 4 Elsie thinks her cyber pet is alive. Explain why she is wrong.



.....

.....

.....

.....